

# For the Health of It

## Clark County Health Department

Jan 1, 2026

VOLUME 9  
ISSUE 1

## NOTABLE NEWS

### ENVIRONMENTAL DEPARTMENT

We would like to welcome a new Environmental Health Specialist to the Team, Nathan Lerit. Nathan comes to us with a degree in Environmental Management from Indiana University, and brings his knowledge from working in the food industry. In his spare time, Nathan enjoys competitive trading card games.

We would like to congratulate our very own Ashleigh Traud, REHS, who has just completed her MS degree in Public Health Administration from Indiana University Bloomington. This opportunity was awarded to Ashleigh through Indiana Hoosier Public Health Scholars Program.

### IN THIS ISSUE

Notable News	Page 1, 2
IVCA	Page 3
Global Recycling Day	Page 4, 5
One Health: <i>Fusarium incarnatum</i>	Page 6
Brain Games	Page 7
Science Spotlight	Page 8
Contact Us	Page 8



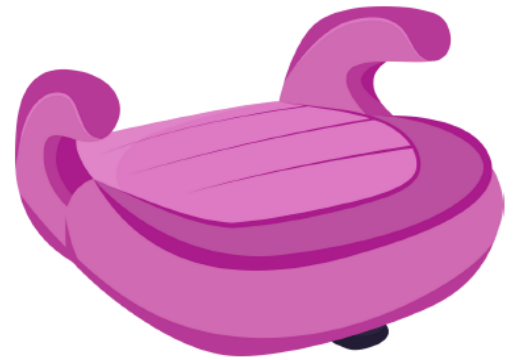
On 12/18/2025, we partnered with the Clark County EMA to deliver a total of 136 backpacks filled with school supplies, hygiene products, and snack items to the multiple schools throughout Clark County. These were part of the Feed the Children initiative and provided by the Niagara company. They asked the EMA to help deliver these to children who would be in need of them. The EMA asked us for assistance, so our school liaison team decided which schools would need them the most and spent the day delivering them.



# Drop-off your car seat to CCHD!

Do you have a car seat that your child has **outgrown** and no longer needs or is **expired**?

Bring it by the Clark County Health Department, second floor, so it can be used in training courses!



**Accepting:** infant carriers with or without the base, convertible seats, forward facing harnesses, and booster seats. If your seat(s) are excessively damaged, we will recycle them.

Thank you!!

\*Remember: never use a car seat if you do not know the history of the seat (wrecks or expired)!

**1201 Wall Street, Jeffersonville, IN**  
**(812) 282-7521**

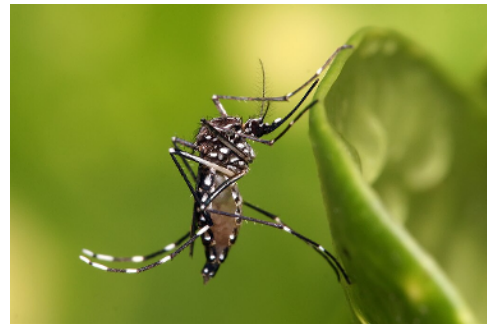
# 50TH ANNUAL INDIANA VECTOR CONTROL ASSOCIATION (IVCA) CONFERENCE

*IVCA's Mission Statement: To bring together our scientific community, educational institutions, business communities and health agencies to provide leadership, information and education leading to the enhancement of health and quality of life through the control of disease-carrying vectors and pests of public health importance in Indiana.*

In March of 2026, the 50th annual IVCA Conference will be taking place. People from all 92 counties, universities, and vector control businesses come together for a day and a half to hear roughly twelve presentations that cover a wide range of topics from mosquito-borne diseases, tick-borne diseases, control methods, success stories on control methods, viruses new to the region, and product reviews from our five sponsors. Since it is the 50th anniversary, the history of IVCA will be a special presentation, with some of the organization's founders in attendance.

Vector control is important to our communities because of the diseases they can carry and transmit. Your Clark County Health Department has a handful of environmentalists trained in mosquito control surveillance and applications, as well as in protecting against ticks and mosquito bites. This year, we trapped 1,238 mosquitoes, with 60 collection rounds tested and 20 of those pools tested positive for West Nile Virus. The mosquitoes we collect are frozen and sent to the state lab for testing, where they are uploaded online and reported back to us if positive for West Nile. Our collection sites go as far as Bethlehem, New Washington, Memphis, while staying as central as Jeffersonville, Clarksville, Old Clarksville, Charlestown, and Sellersburg. These collection sites are useful for surveillance purposes, not for the reduction or elimination of mosquitoes.

While being fully dedicated to mosquito surveillance and control locally, your Clark County Health Department stays involved in IVCA. Zak McKinley has been with CCHD for roughly eight years now, and has been the past President of IVCA and is currently serving as the Southern Delegate. Samantha Goodwin has been with CCHD for two years and is also President-Elect and will be officially President next year.



If you would like to follow along on our mosquito surveillance, you can go to the Indiana Mosquito-Borne Illness Dashboard on Indiana's Department of Health website, where the tested number of mosquitoes are updated every Tuesday and Friday during mosquito months.

[HTTPS://WWW.IN.GOV/HEALTH/HOME/INDIANA-MOSQUITO-BORNE-ACTIVITY-DASHBOARD/](https://www.in.gov/health/home/indiana-mosquito-borne-activity-dashboard/)

# MARCH 18TH: GLOBAL RECYCLING DAY



## SEVEN QUESTIONS

WE NEED TO ASK OURSELVES TO ENSURE WE CREATE HOUSEHOLDS AND COMMUNITIES WHICH RECYCLE AS RESPONSIBLY AS POSSIBLE

Am I sufficiently aware of my government's recycling legislation, or should I be demanding more?

7

1

Do I dispose of everything I have used (from plastic bottles to refrigerators to cars) properly, so it can be recycled?

2

Do I know my municipality's policies on recycling and do I follow them?

3

Do I know what happens to my recyclables once they are taken away by my local municipality?

4

Do I, my family and my friends, mend, repair and reuse in order to sustain the usefulness of the items around us for as long as possible?

5

Am I committed to producing as little waste as I can?

6

Do I know how, and do the brands that I buy make it easy for me, to make the right 'recycling friendly' purchasing decisions?



To learn more about our role in supporting a thriving recycling industry log on to [www.globalrecyclingday.com](http://www.globalrecyclingday.com)

To join voices across the world to have Global Recycling Day recognised by the UN please sign our petition by clicking [here](#).



# CLARK COUNTY RECYCLING DISTRICT

**RECYCLE MORE!**  
www.recycleclarkcounty.org

**PAPER**

- Flattened Cardboard (clean & empty)
- Paper Containers & Cups (clean & empty)
- Milk, Juice & Soup Cartons (clean & empty)
- Newspapers/Inserts, Phone Books, Magazines, Junk Mail & Office Paper

**NO TISSUE**

**PLASTIC 1-7**

- Plastic Bottles, Cups & Containers (clean & empty)

**NO PLASTIC BAGS**

**GLASS**

- Glass Bottles & Jars (clean & empty)

**NO WINDOWS OR CERAMICS**

**METAL**

- Steel & Aluminum Foil, Bottles/Cans (clean & empty)

**NO PAINT CANS**

**HOW TO PREPARE YOUR RECYCLABLES:**

- Recyclables should be clean and empty
- Do not use plastic bags; leave recyclables loose.
- Include only listed items. If you are unsure, call Clark County Recycling at 812-256-7942.

**TIP:** Return grocery bags to participating stores for recycling.

**EARTH DAY EVERY DAY** MAKE

Clark County Recycling District • 812-256-7942

## Mission Statement:

- 1.) To reduce the amount of solid waste disposal to extend the life of the Clark County Landfill
- 2.) Assist in providing clean land, air, and waterways for Clark County

## Core Values:

Environmental responsibility

Attentive customer service

Safety of residents, environment, property, and equipment

Innovation: review, revise, and implement recycling solutions to meet community needs

## Funding & Drop-Off Locations:

Established by Clark County Ordinance #1993-OR-34 in June 1993, the mandatory recycling program applies to residents within Sellersburg, Jeffersonville, and Clarksville. All households in these city limits must pay a yearly recycling fee of \$34.00, regardless of participation. This fee is included in the property tax statement.

For residents in unincorporated areas of Clark County, a yearly fee of \$17.00 allows access to drop-off recycling at the following locations:

Memphis: 1000 Main St.

Henryville: 102 S. Ferguson St.

New Washington: 411 S. Poplar St.

Starlight: St. Johns/Rake Rd.

Borden: 14304 Hwy. 60

## Recycling District Office:

**Address:** 112 Industrial Way, Charlestown

**Hours:** Monday–Friday: 7:00 a.m.–3:30 p.m. Wednesday: 7:00 a.m.–7:00 p.m.

**Email:** [info@recycleclarkcounty.org](mailto:info@recycleclarkcounty.org)

# ONE HEALTH: FUSARIUM INCARNATUM-EQUISETI SPECIES COMPLEX (FIESC)

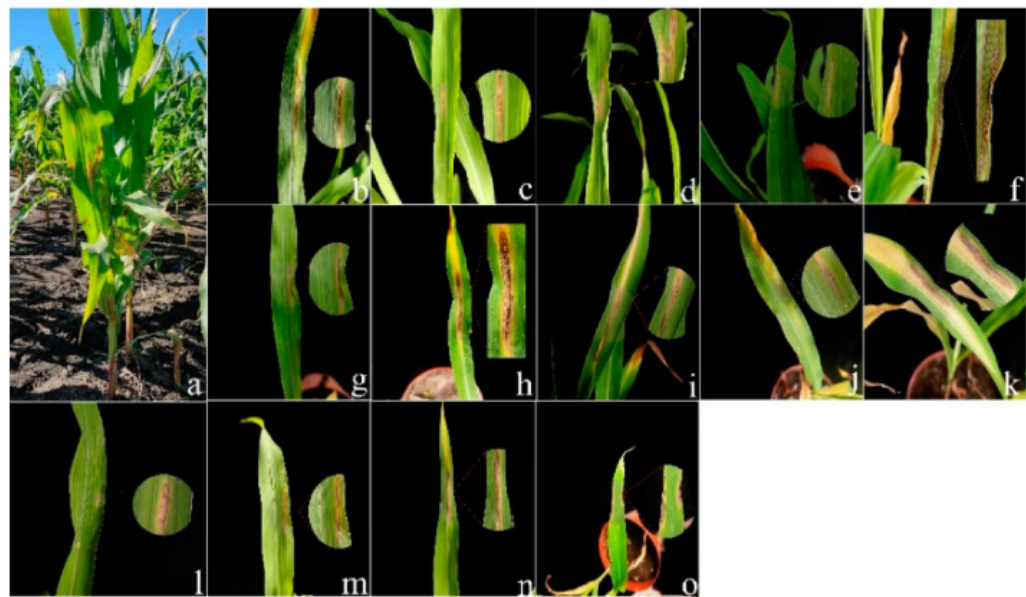
Yep, I never heard of it either. Apparently, it is an extremely significant pathogen worldwide in crops, and can also infect humans and animals. *Fusarium incarnatum* is a fungus that can group together with over 40 species to form a colony, or complex. The entire genus is still being classified but it is believed that it may consist of over 300 possible species. It can be found in soil, air, and water. In crops, it can cause leaf blight, root rot, and seedling blight among other maladies. Agricultural and economic loss can be substantial.

Animals are also affected, including aquatic organisms. It even affects turtle eggs, and may be a main contributor to sea turtle population decline. FIESC is also linked to illness in dogs, horses, and pigs. It produces harmful mycotoxins, which are a public health risk.

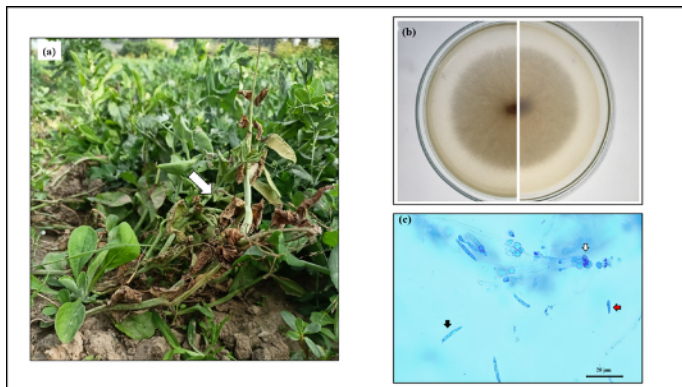
In humans, FIESC can cause onychomycosis and keratitis as well as more invasive (neutropenia) even fatal disease. Typically, this is in immunocompromised individuals. Oftentimes, these diseases are difficult to treat due to antifungal resistance stemming from overuse of fungicides in agriculture.

The fungus has also been found in plumbing and air distribution systems and can be particularly harmful when found in hospital settings.

Using a One Health approach helps us see how *Fusarium* affects people, animals, and the environment all at once. This big-picture view makes it easier to spot problems early and find safer, smarter ways to protect everyone's health.



**Figure 4.** (a) Leaf blight symptoms on maize leaves caused by *Fusarium* species in the field; (b–o) Typical symptoms observed in greenhouse on maize leaves after inoculation with: (b) *F. ipomoeae*; (c) *F. compactum*; (d) *F. flagelliforme*; (e) *F. asiaticum*; (f) *F. armeniacum*; (g) *F. citri*; (h) *F. sporotrichioides*; (i) *Fusarium* sp.; (j) *F. glycines*; (k) *F. graminearum*; (l) *F. annulatum*; (m) *F. temperatum*; (n) *F. verticillioides*; (o) *F. acuminatum*.



Sáenz, V.; Alvarez-Moreno, C.; Pape, P.L.; Restrepo, S.; Guarro, J.; Ramírez, A.M.C. A One Health Perspective to Recognize *Fusarium* as Important in Clinical Practice. *J. Fungi* 2020, 6, 235. <https://doi.org/10.3390/jof6040235>

Lu, Yunan, et al. "Species diversity and toxigenic potential of *Fusarium incarnatum-equiseti* species complex isolates from rice and soybean in China." *Plant Disease* 105.9 (2021): 2628-2636.

Namisy, Ahmed, et al. "*Fusarium incarnatum*: a paradigm for One Health pathogen dynamics across humans, animals, and the environment." *Microbiology Spectrum* (2025): e01919-25.

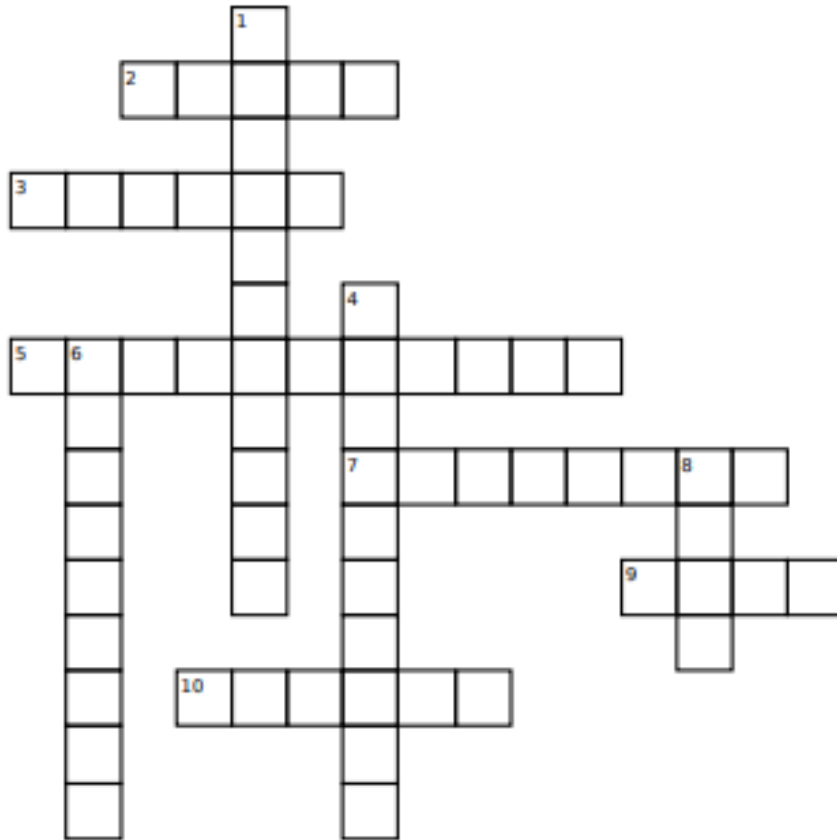
Photos:

Ghosal, Debraj & Datta, Bejoysekhar. (2025). Molecular characterization and in silico analysis of 'secreted in xylem 4' (Six4) gene from *Fusarium oxysporum* infecting *Pisum sativum*. *Archives of Microbiology*. 207. 10.1007/s00203-025-04545-3.

Xu, X.; Zhang, L.; Yang, X.; Shen, G.; Wang, S.; Teng, H.; Yang, C.; Liu, X.; Wang, X.; Zhao, J.; et al. *Fusarium* Species Associated with Maize Leaf Blight in Heilongjiang Province, China. *J. Fungi* 2022, 8, 1170. <https://doi.org/10.3390/jof8111170>

# MENTAL HEALTH: BRAINGAMES

## CROSSWORD



### Down:

1. you make these promises in the new year
4. one resolution is to eat more of these in the new year
6. "Learn from \_\_\_\_\_, live for today, hope for tomorrow"
8. the best part about winter!

### Across:

2. getting more of this will help you focus the following day
3. don't eat snow that is this color
5. careful you don't get this while exercising in the cold
7. another word for physical activity, important in the new year
9. The only thing "running" when it's this cold
10. "It is \_\_\_\_\_ that is real wealth and not pieces of gold and silver" - Mahatma Gandhi

## Research Priorities for Zoonotic and Pandemic Influenza Vaccines: Evidence and Recommendations from the WHO Public Health Research Agenda for Influenza (2024 Update)

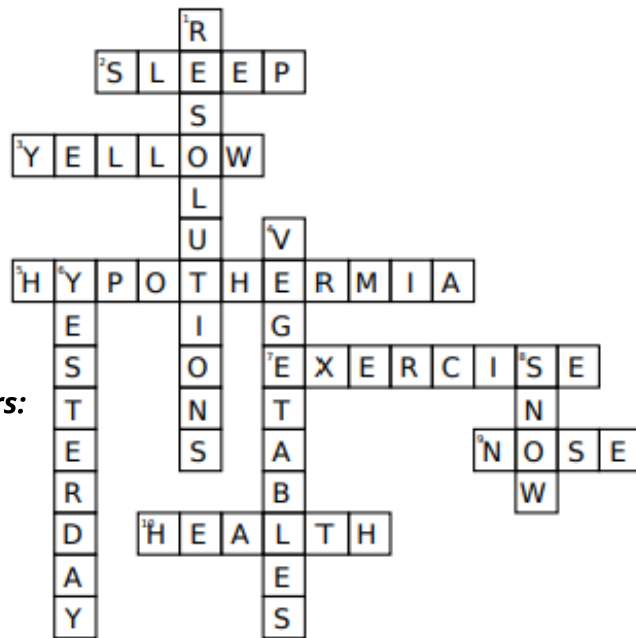
Wenqing Zhang, Benjamin J. Cowling, John S. L. Tam, Thomas Abraham, Hualan Chen, Keenan Duggal, Wei Xin Khong, Sebastian Maurer-Stroh, Arnold S. Monto, Sergejs Nikisins, Tulio de Oliveira, Yuelong Shu, Cecile Viboud, Richard Webby, Sylvie van der Werf, Jessica Wong and Jean-Michel Heraud

### Abstract

Zoonotic influenza viruses, including highly pathogenic avian influenza and swine-origin variants, continue to cause sporadic human infections with, in some cases, high case fatality rates and potential for sustained human-to-human transmission. The COVID-19 pandemic underscored both the possibilities of rapid vaccine innovation and the persistent challenges in equitable access and public trust. This paper synthesizes the vaccine-related priorities from the 2024 update of the World Health Organization Public Health Research Agenda for Influenza, integrating evidence from systematic literature reviews commissioned, expert consultations, and analysis of lessons learned from recent health emergencies, to outline a research and policy roadmap for zoonotic and pandemic influenza vaccine preparedness. Key research priorities identified include development of broadly protective animal and human vaccines; improved understanding of correlates of protection; rapid and scalable manufacturing platforms; predictive modelling for strain selection; and targeted communication strategies to strengthen uptake. Experts have considered that implementing these priorities will require One Health integration, sustained investment, harmonized regulatory frameworks, and proactive community engagement to ensure that advances in vaccine science translate into timely, equitable public health protection.

Zhang, W.; Cowling, B.J.; Tam, J.S.L.; Abraham, T.; Chen, H.; Duggal, K.; Khong, W.X.; Maurer-Stroh, S.; Monto, A.S.; Nikisins, S.; et al. Research Priorities for Zoonotic and Pandemic Influenza Vaccines: Evidence and Recommendations from the WHO Public Health Research Agenda for Influenza (2024 Update). *Vaccines* 2025, 13, 1206.

<https://doi.org/10.3390/vaccines13121206>



### Crossword Answers:

#### Administration/Vital Records/Environmental

1201 Wall Street Jeffersonville IN 47130

Phone 812-282-7521

#### Public Health Nurse

1201 Wall Street Jeffersonville IN 47130

Phone 812-283-2459

#### HIV/STD Program Office

Phone 812-288-2706

#### Office Hours

Monday - Friday:

8:30 am - 4:30 pm

Saturday - CLOSED

Sunday - CLOSED

## Public Health

Prevent. Promote. Protect.

### Clark County Health Department